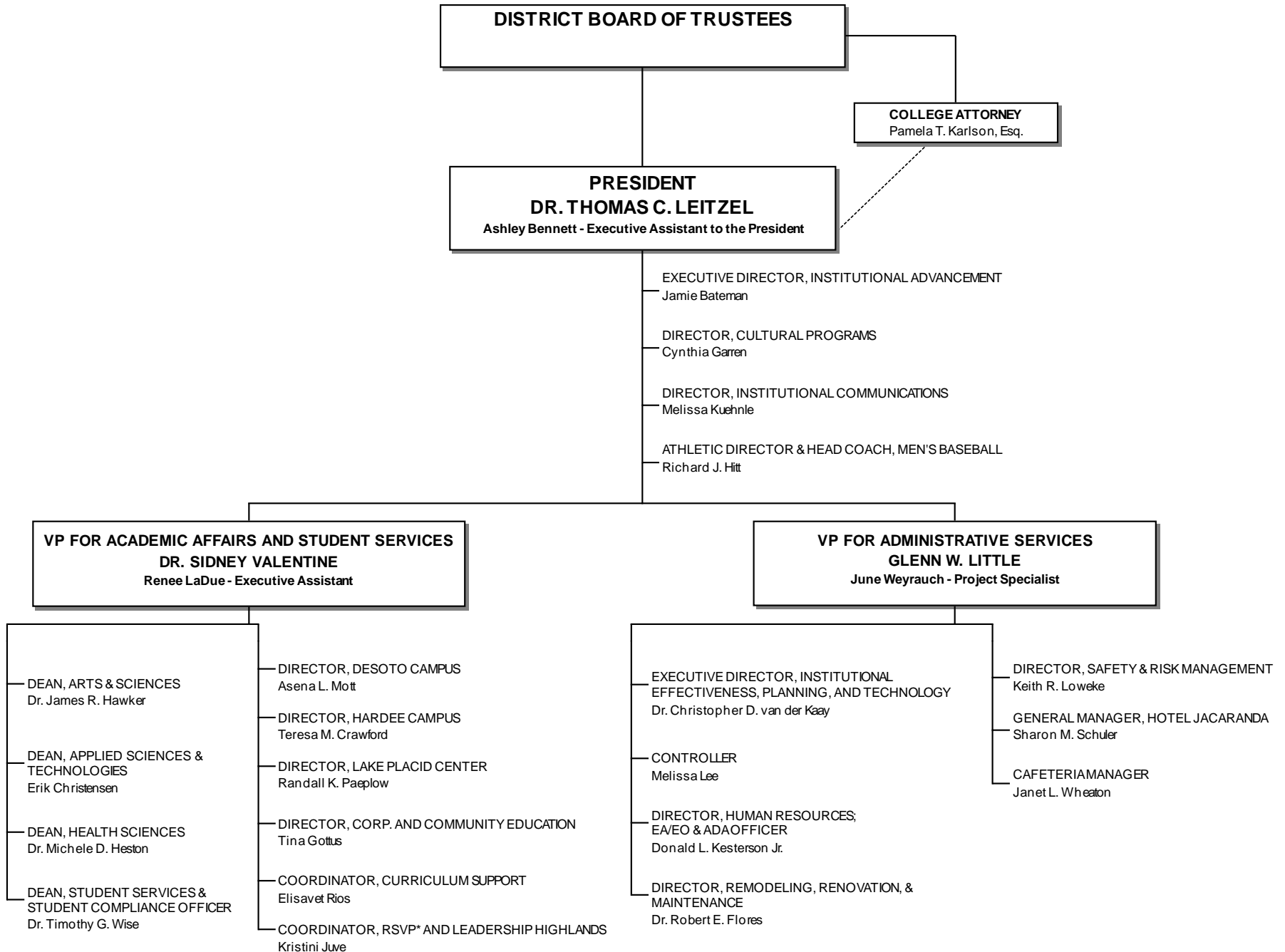
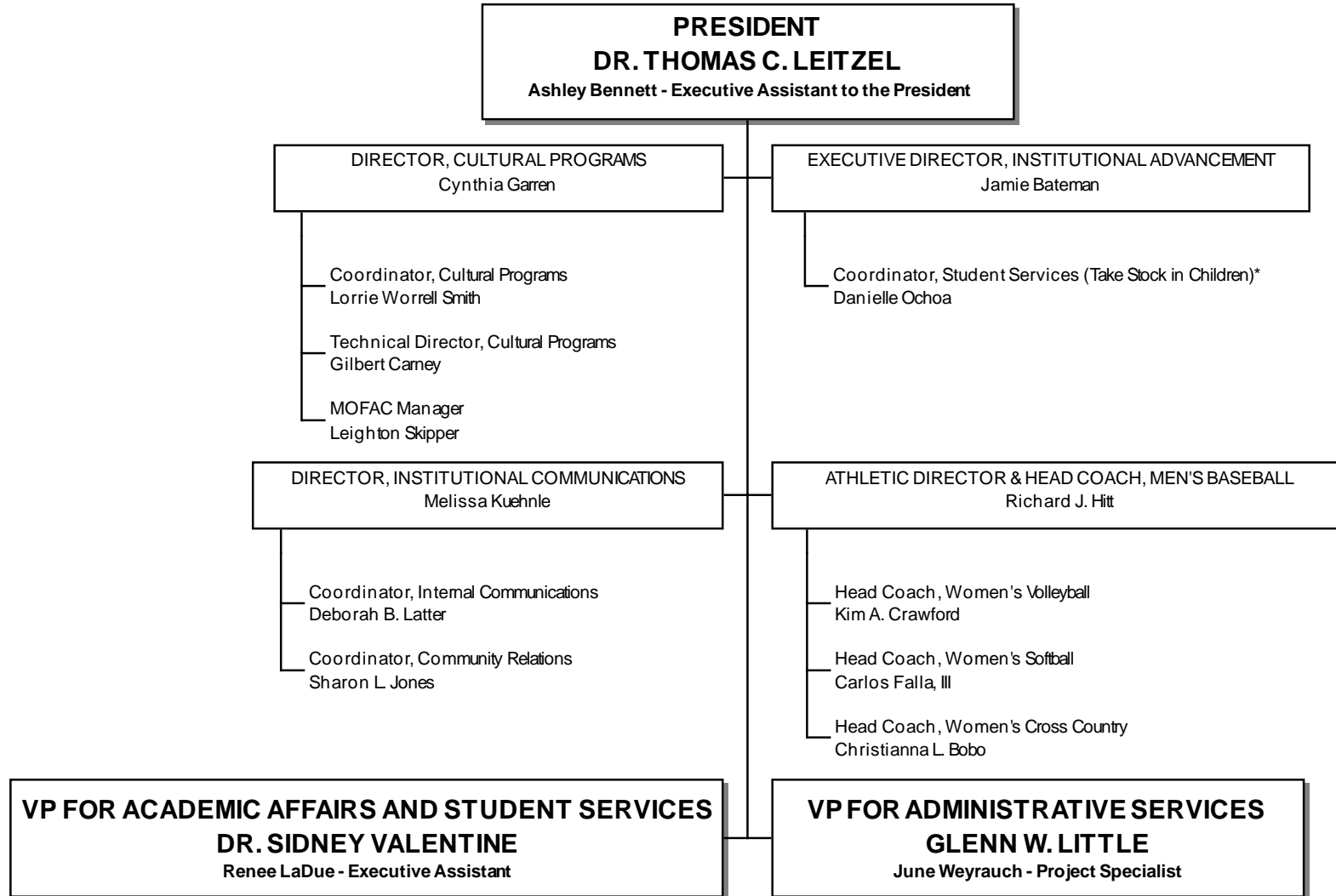


# SOUTH FLORIDA STATE COLLEGE 2019-2020 ORGANIZATIONAL CHART



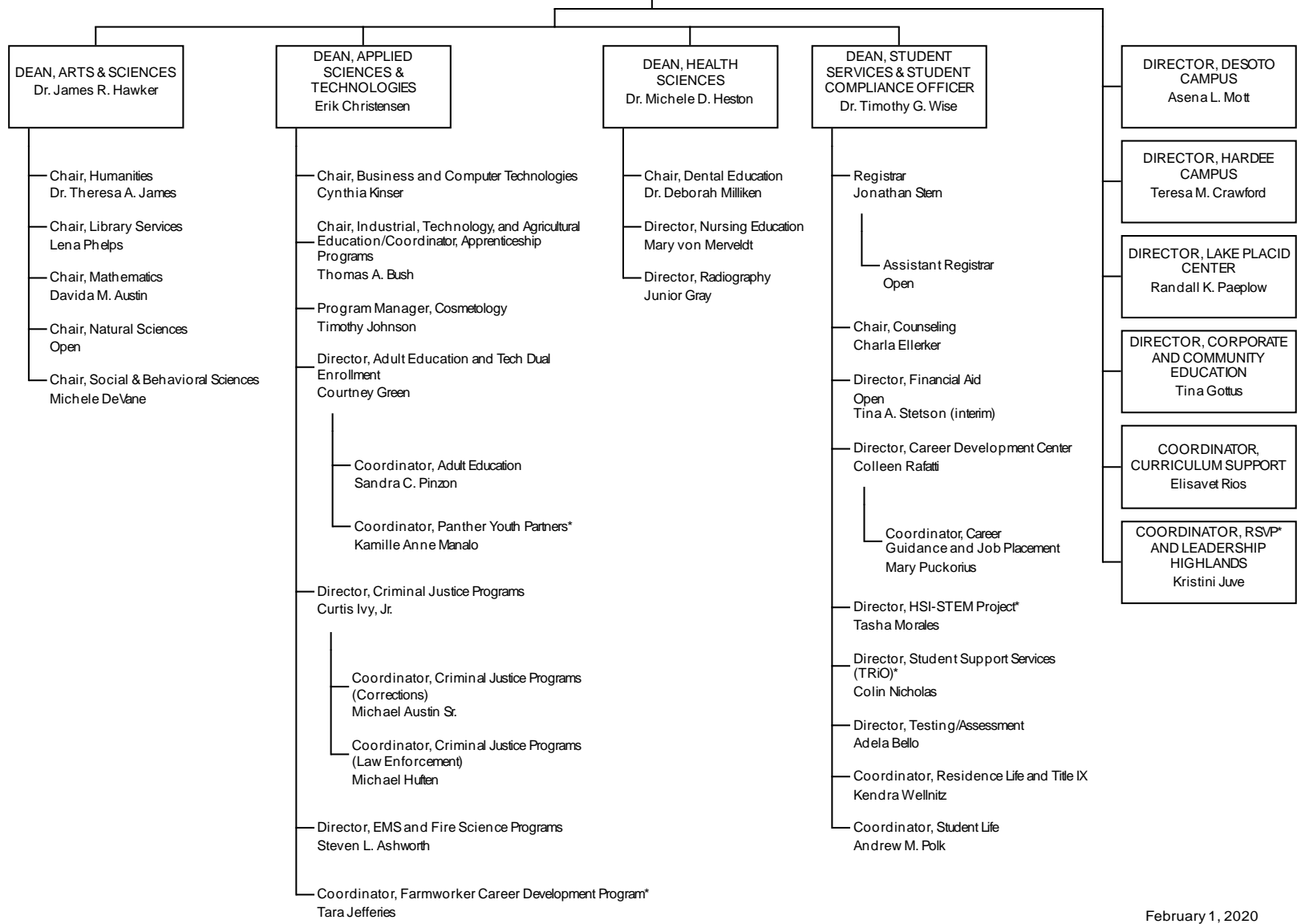
\*Grant funded

# SOUTH FLORIDA STATE COLLEGE 2019-2020 ORGANIZATIONAL CHART



\*Grant funded

**VP FOR ACADEMIC AFFAIRS AND STUDENT SERVICES**  
**DR. SIDNEY VALENTINE**  
 Renee LaDue - Executive Assistant



\*Grant funded

**VP FOR ADMINISTRATIVE SERVICES**  
**GLENN W. LITTLE**  
 June Weyrauch - Project Specialist

