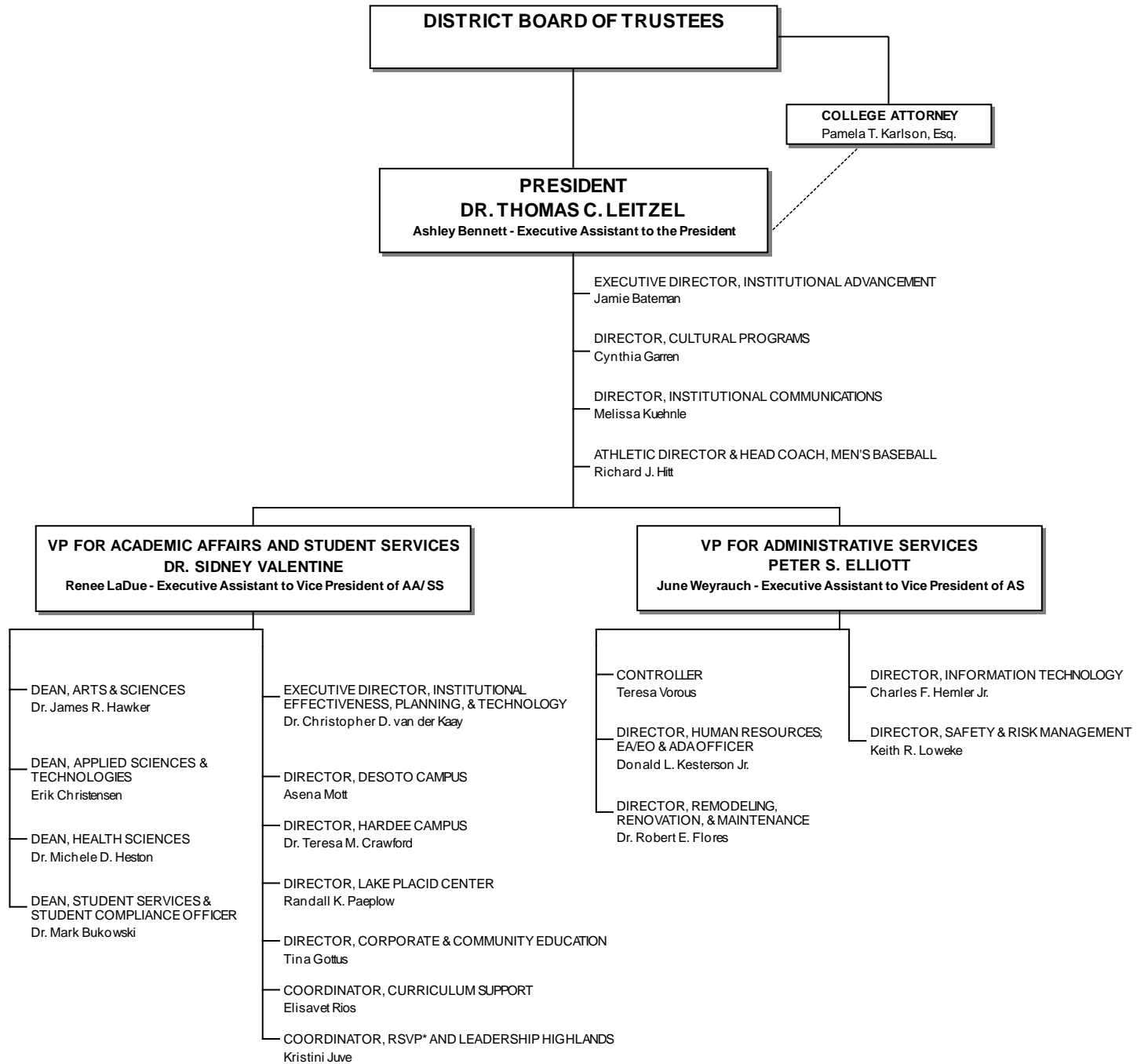
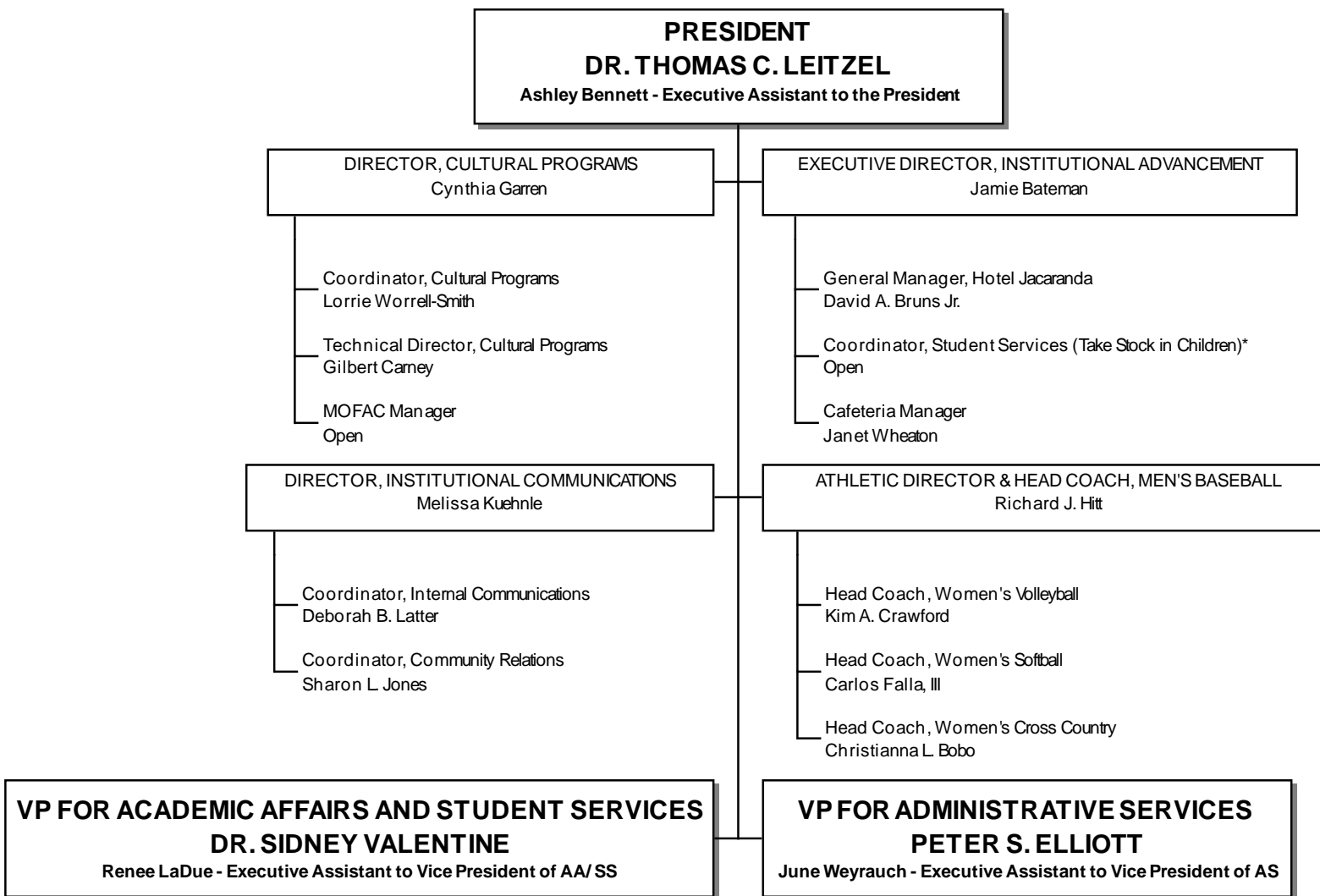


# SOUTH FLORIDA STATE COLLEGE 2021-2022 ORGANIZATIONAL CHART

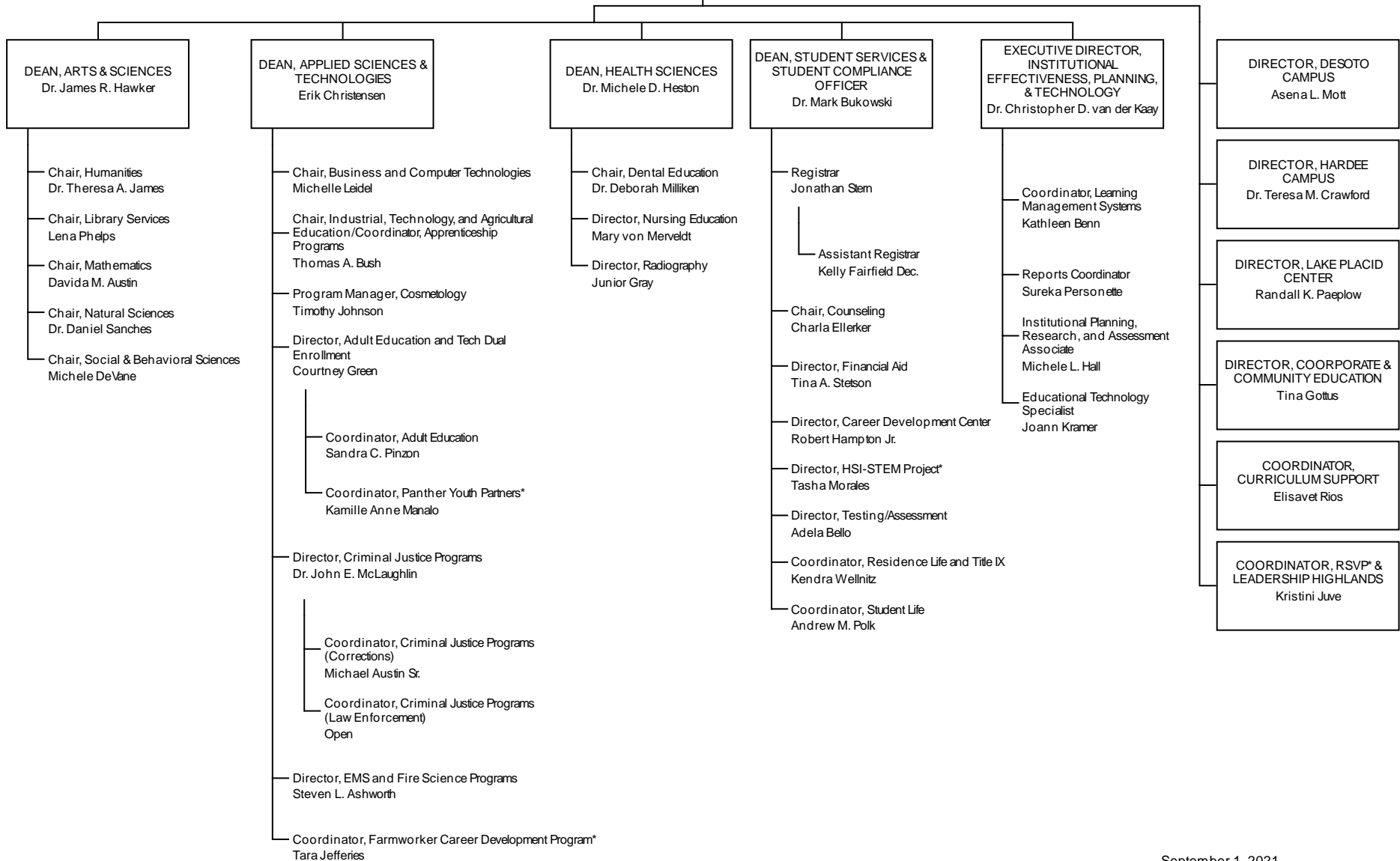


# SOUTH FLORIDA STATE COLLEGE 2020-2021 ORGANIZATIONAL CHART



\*Grant funded

**VP FOR ACADEMIC AFFAIRS AND STUDENT SERVICES**  
**DR. SIDNEY VALENTINE**  
 Renee LaDue - Executive Assistant to Vice President of AA/SS



\*Grant funded

**VP FOR ADMINISTRATIVE SERVICES  
PETER S. ELLIOTT**  
June Weyrauch - Executive Assistant to Vice President of AS

