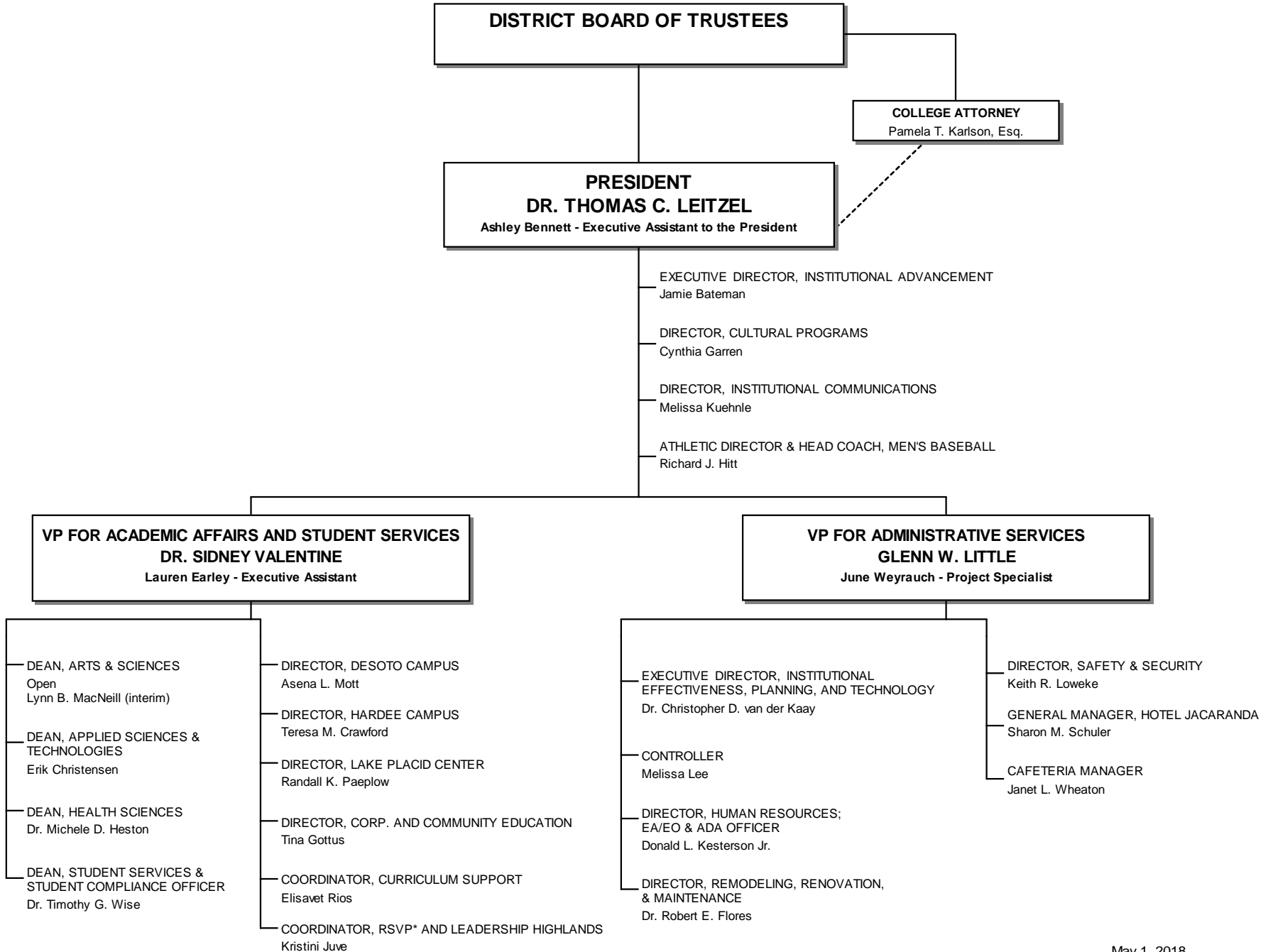
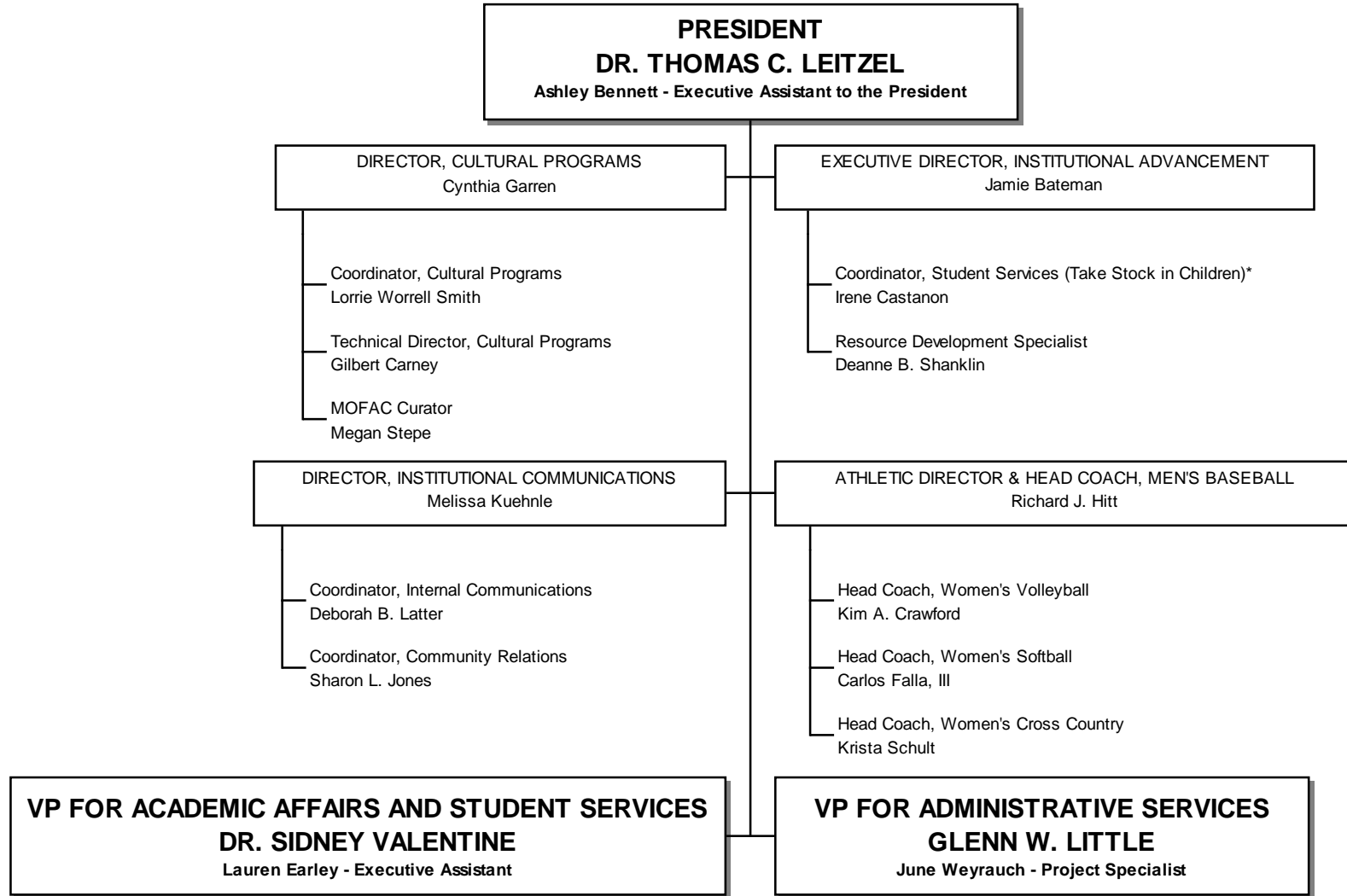


SOUTH FLORIDA STATE COLLEGE 2017-2018 ORGANIZATIONAL CHART



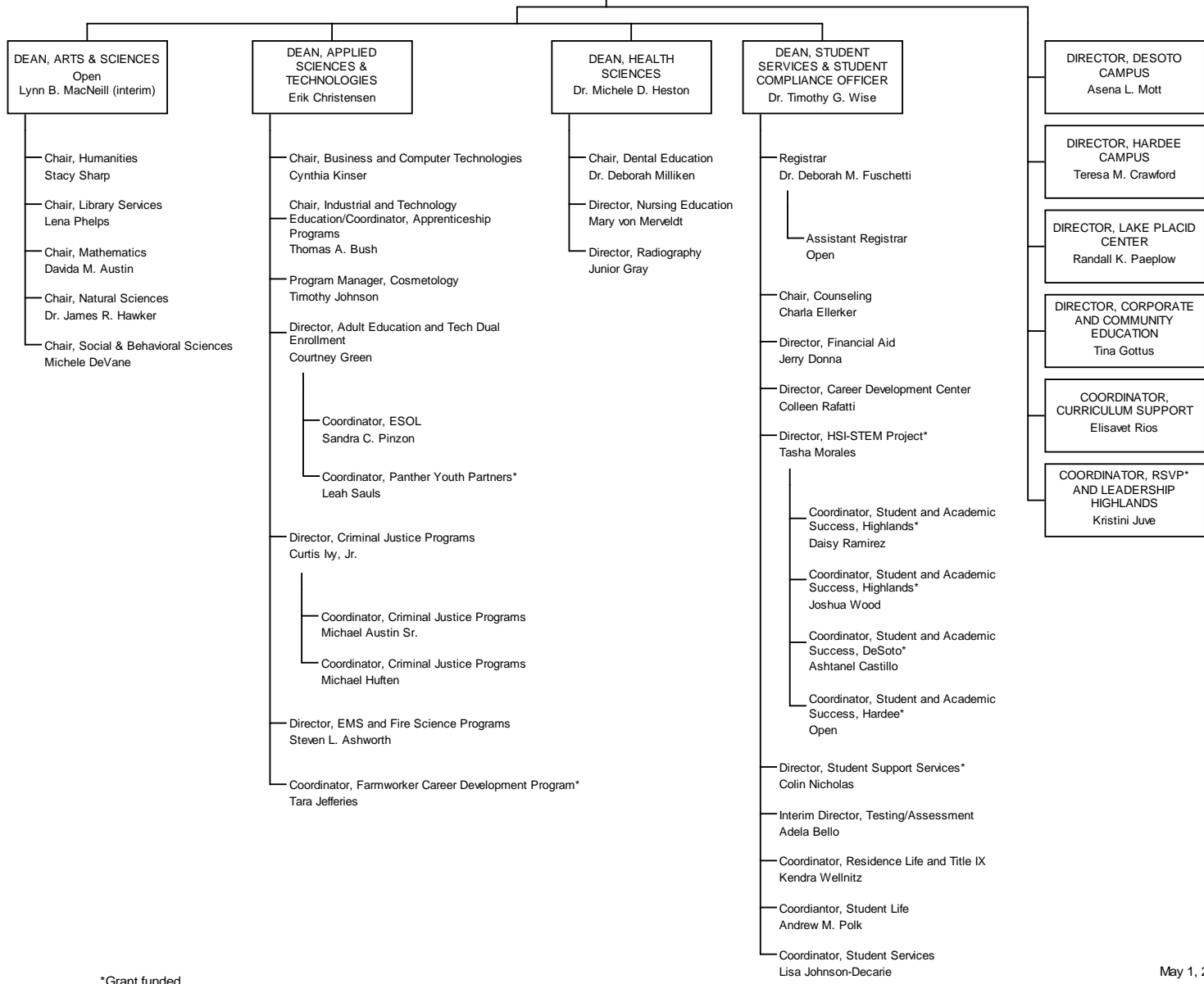
*Grant funded

SOUTH FLORIDA STATE COLLEGE 2017-2018 ORGANIZATIONAL CHART



*Grant funded

VP FOR ACADEMIC AFFAIRS AND STUDENT SERVICES
DR. SIDNEY VALENTINE
 Lauren Earley - Executive Assistant



*Grant funded

VP FOR ADMINISTRATIVE SERVICES
GLENN W. LITTLE
 June Weyrauch - Project Specialist

