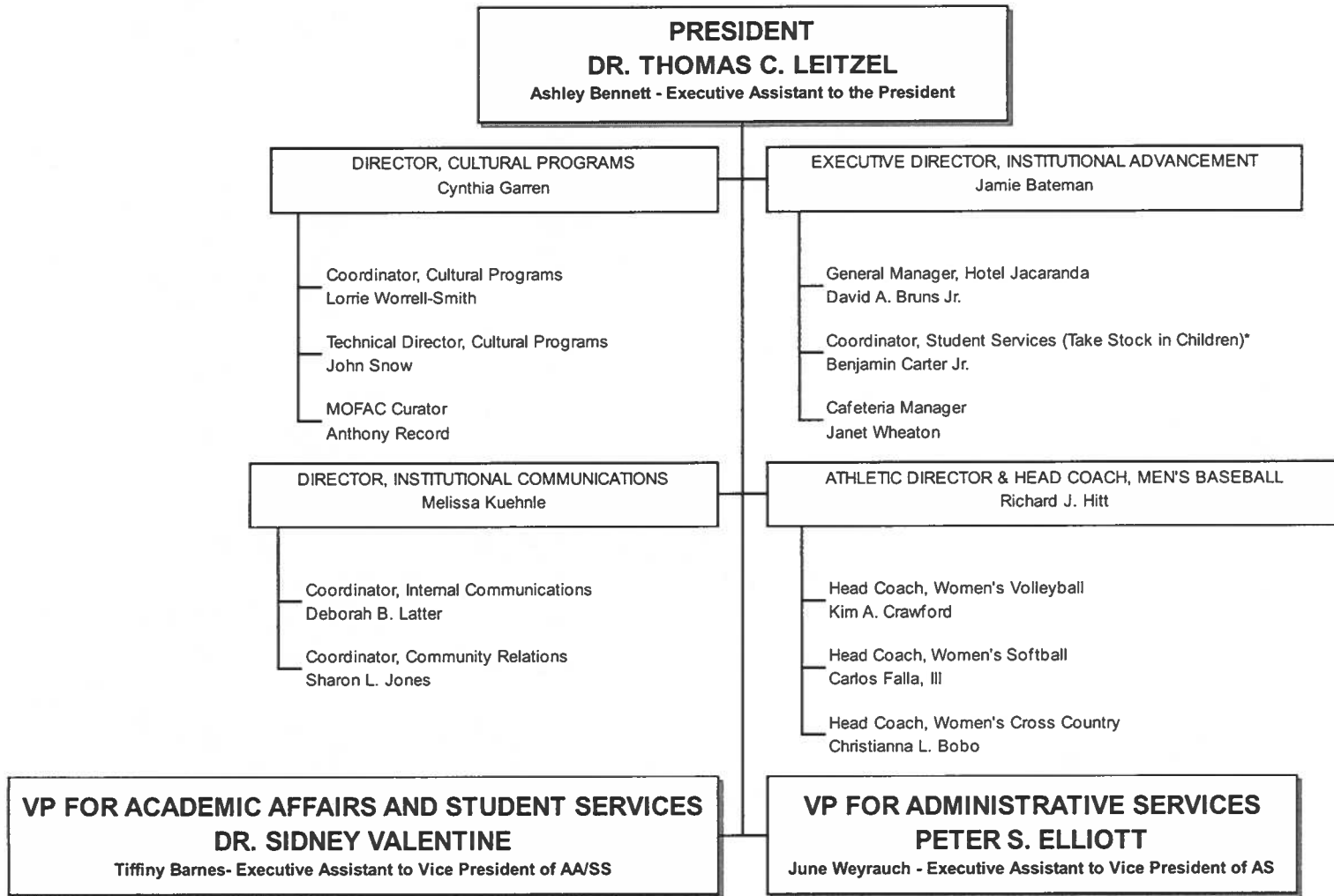
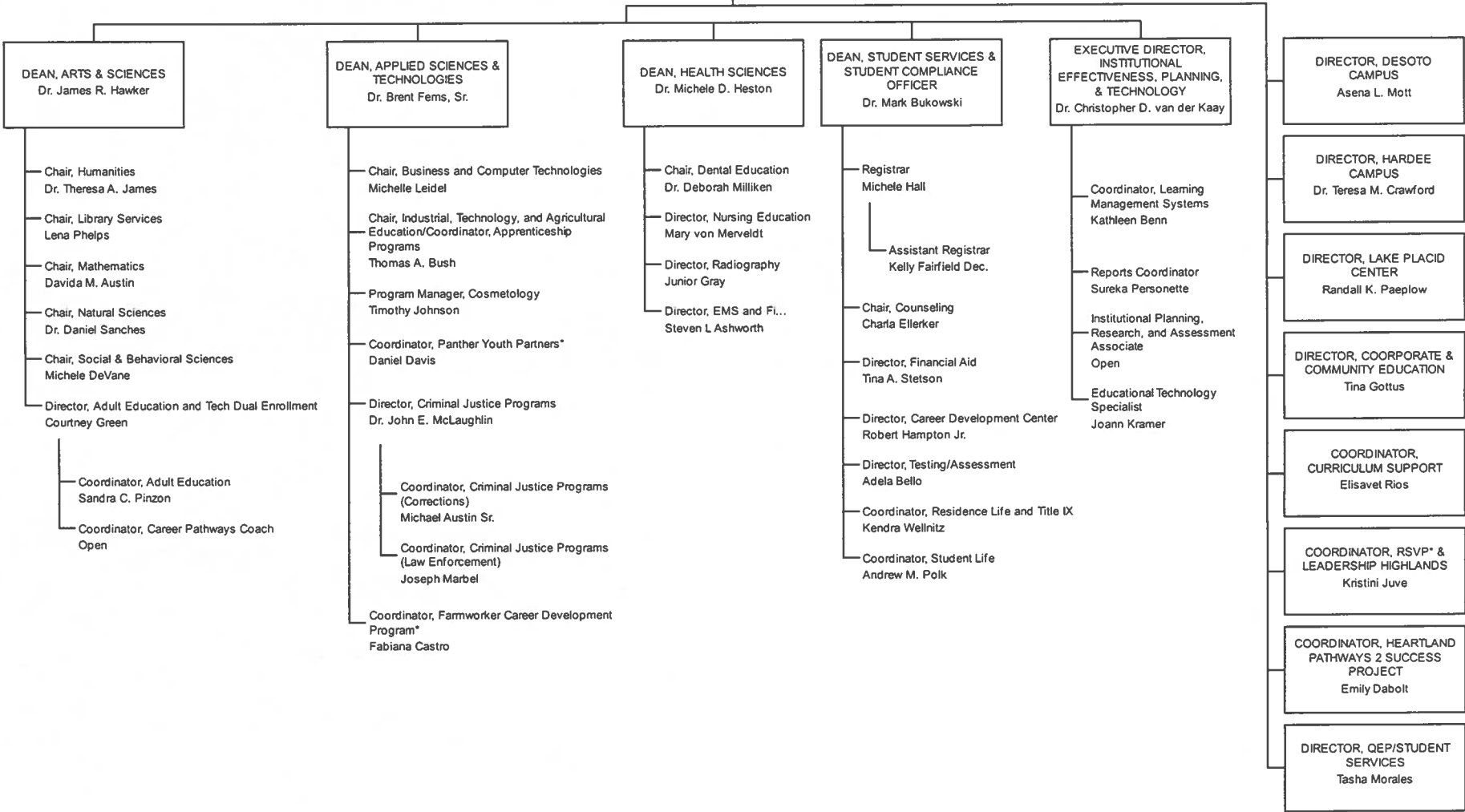


**SOUTH FLORIDA STATE COLLEGE
2021-2022 ORGANIZATIONAL CHART**



*Grant funded

VP FOR ACADEMIC AFFAIRS AND STUDENT SERVICES
DR. SIDNEY VALENTINE
 Tiffany Barnes- Executive Assistant to Vice President of AA/SS



*Grant funded

VP FOR ADMINISTRATIVE SERVICES
PETER S. ELLIOTT
June Weyrauch - Executive Assistant to Vice President of AS

