




EXHIBIT "Q"

OFFICE OF THE PRESIDENT

Item 9.1

PRESENT TO BOARD: DECEMBER 7, 2022

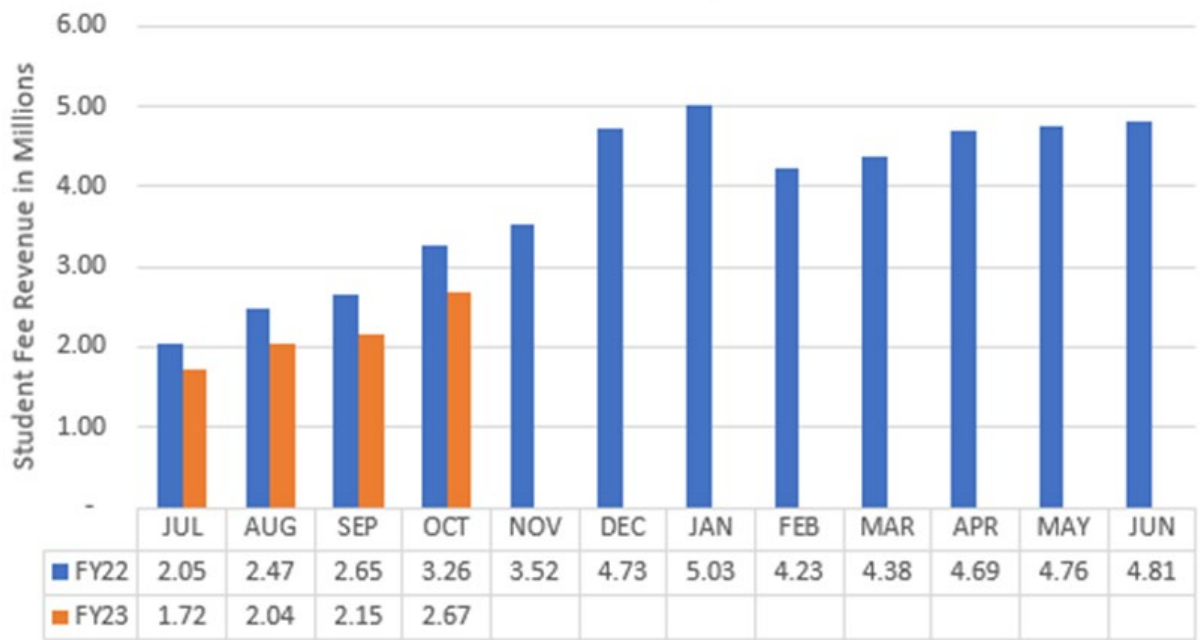
TO: SOUTH FLORIDA STATE COLLEGE
DISTRICT BOARD OF TRUSTEES

FROM: THOMAS C. LEITZEL 

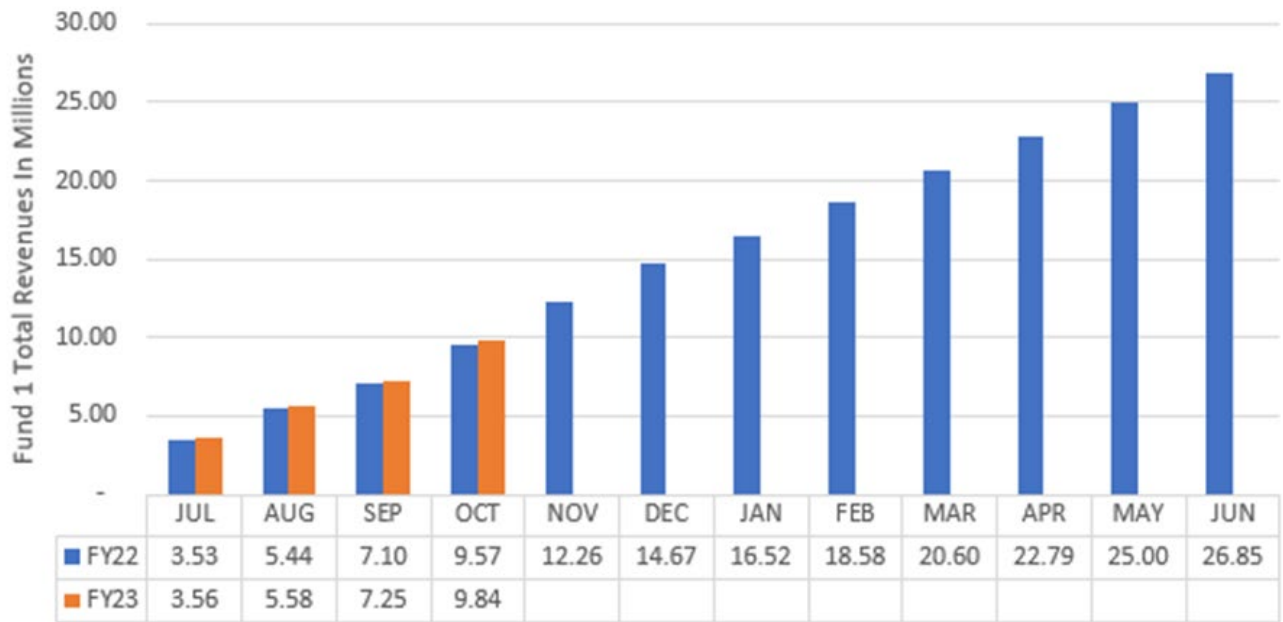
SUBJECT: FINANCIAL REPORT SUMMARY & GRAPHS – **INFORMATION ITEM**

Enclosed for your review are the graphs and a summary of revenues and expenditures compared to budgeted funds within the Operating Budget through October 2022.

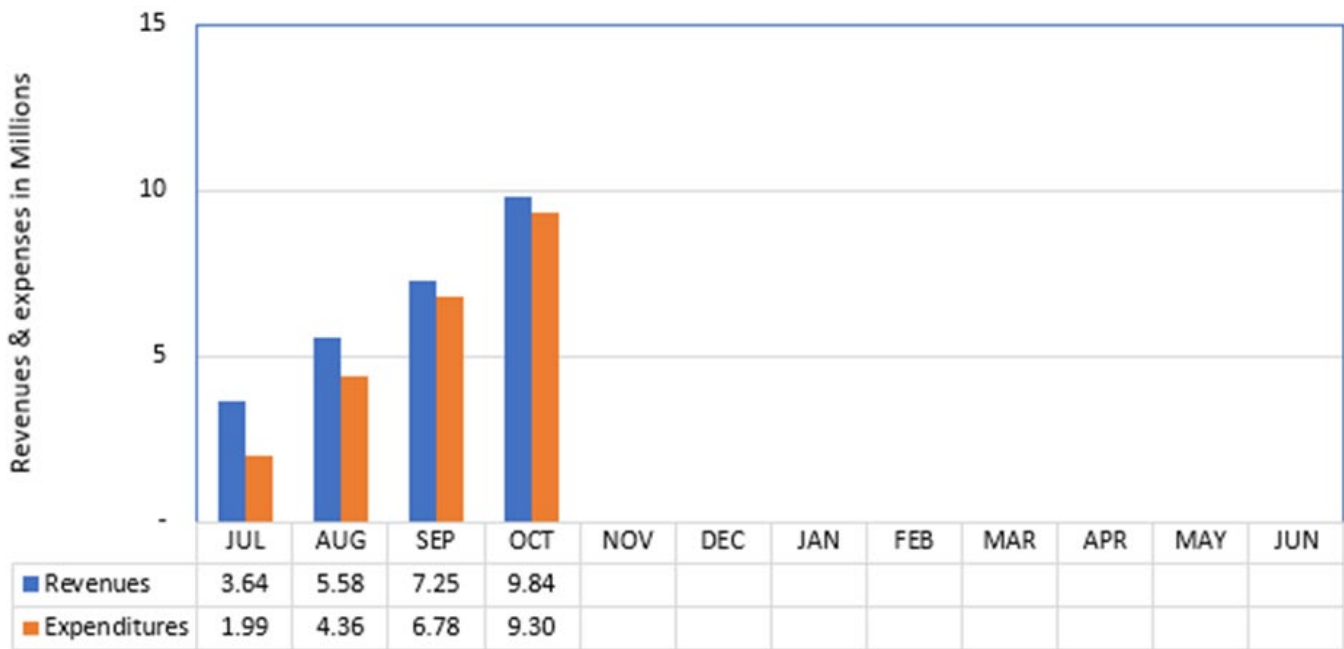
**South Florida State College
Fund 1 - Student Fee Revenue, FY22 vs FY23**



South Florida State College Fund 1 - Total Revenue FY22 vs FY23



South Florida State College Fund 1 Total Revenues & Expenditures FY23



South Florida State College
Revenue and Expenditures
For Month Ending October 31, 2022

Account Title	Budget Amount	Amount	Difference	Percentage Collected/Spent to Date
Tuition and Out of State Fees	4,165,275.00	2,209,975.10	1,955,299.90	53.06%
Lab Fees	495,023.00	324,930.00	170,093.00	65.64%
Technology Fees	189,932.00	106,126.82	83,805.18	55.88%
Other Student Fees	66,373.00	31,623.13	34,749.87	47.64%
Grants and Contracts from Counties	1,023,395.00	607,833.72	415,561.28	59.39%
FCSPF-General/Special Appropriation	18,485,964.00	5,961,944.39	12,524,019.61	32.25%
Performance Based Incentive	324,747.00	72,564.00	252,183.00	22.34%
CO&DS Entitlement	1,100.00	-	1,100.00	0.00%
FCSPF-Lottery	3,461,595.00	384,622.00	3,076,973.00	11.11%
Indirect Costs Recovered	751,562.00	61,839.42	689,722.58	8.23%
Cash/Non-Cash Contributions and Gifts	22,040.00	8,652.44	13,387.56	39.26%
Use of College Facilities	50,000.00	13,115.84	36,884.16	26.23%
Other Sales and Services	80,000.00	18,030.06	61,969.94	22.54%
Interest and Dividends	4,000.00	8,099.54	(4,099.54)	202.49%
Fines and Penalties/Miscellaneous	120,422.00	31,784.83	88,637.17	26.39%
Transfers and Other Revenues	100,000.00	-	100,000.00	0.00%
Total Revenue	\$ 29,341,428.00	\$ 9,841,141.29	\$ 19,500,286.71	33.54%
Management	2,099,540.80	660,963.02	1,438,577.78	31.48%
Instructional	5,480,122.59	1,519,934.64	3,960,187.95	27.74%
Other Professional	3,666,364.72	1,041,252.73	2,625,111.99	28.40%
Career Staff	3,213,183.15	990,600.68	2,222,582.47	30.83%
Other Professional-Instructional	1,398,240.00	338,352.55	1,059,887.45	24.20%
Other Professional-Tech/Clerical/Trade	206,248.73	24,834.53	181,414.20	12.04%
Student Employment	25,000.00	641.88	24,358.12	2.57%
Employees Awards-Non Recurring	13,000.00	-	13,000.00	0.00%
Benefits	5,293,559.40	1,582,522.51	3,711,036.89	29.90%
Total Personnel	\$ 21,395,259.39	\$ 6,159,102.54	\$ 34,982,951.13	28.79%
Travel	281,928.00	34,287.23	247,640.77	12.16%
Freight and Postage	21,437.00	10,258.79	11,178.21	47.86%
Telecommunications	62,000.00	64,128.77	(2,128.77)	103.43%
Printing	38,510.00	2,711.46	35,798.54	7.04%
Repairs and Maintenance	1,715,143.66	725,207.24	989,936.42	42.28%
Rentals	158,705.00	67,484.66	91,220.34	42.52%
Insurance	550,682.00	47,086.03	503,595.97	8.55%
Utilities	1,658,078.00	557,596.72	1,100,481.28	33.63%
Other Services	910,418.67	377,259.81	533,158.86	41.44%
Grant Aid	4,280.00	72.50	4,207.50	1.69%
Professional Fees	132,553.00	83,856.86	48,696.14	63.26%
Education Office/Dept Materials Supp	699,939.00	293,161.63	406,777.37	41.88%
Data Software	208,277.50	111,103.49	97,174.01	53.34%
Maint/Construction Material/Supp	418,263.14	113,834.24	304,428.90	27.22%
Other Materials and Supplies	131,706.78	149,438.46	(17,731.68)	113.46%
Subscriptions/Library	60,600.00	15,079.88	45,520.12	24.88%
Purchases for Resales	42,100.00	5,643.02	36,456.98	13.40%
Scholarships	45,000.00	14,364.00	30,636.00	31.92%
Transfers and Other Expenses	150,000.00	1,210.06	148,789.94	0.81%
Total Current Expenses	\$ 7,289,621.75	\$ 2,673,784.85	\$ 4,615,836.90	36.68%
Minor Equipment >1000<5000	266,012.86	127,799.17	138,213.69	48.04%
Furniture and Equipment	429,044.00	343,285.26	85,758.74	80.01%
Total Capital Outlay	\$ 695,056.86	\$ 471,084.43	\$ 223,972.43	67.78%