




EXHIBIT "F"

OFFICE OF THE PRESIDENT

Item 9.1

PRESENT TO BOARD: JANUARY 18, 2023

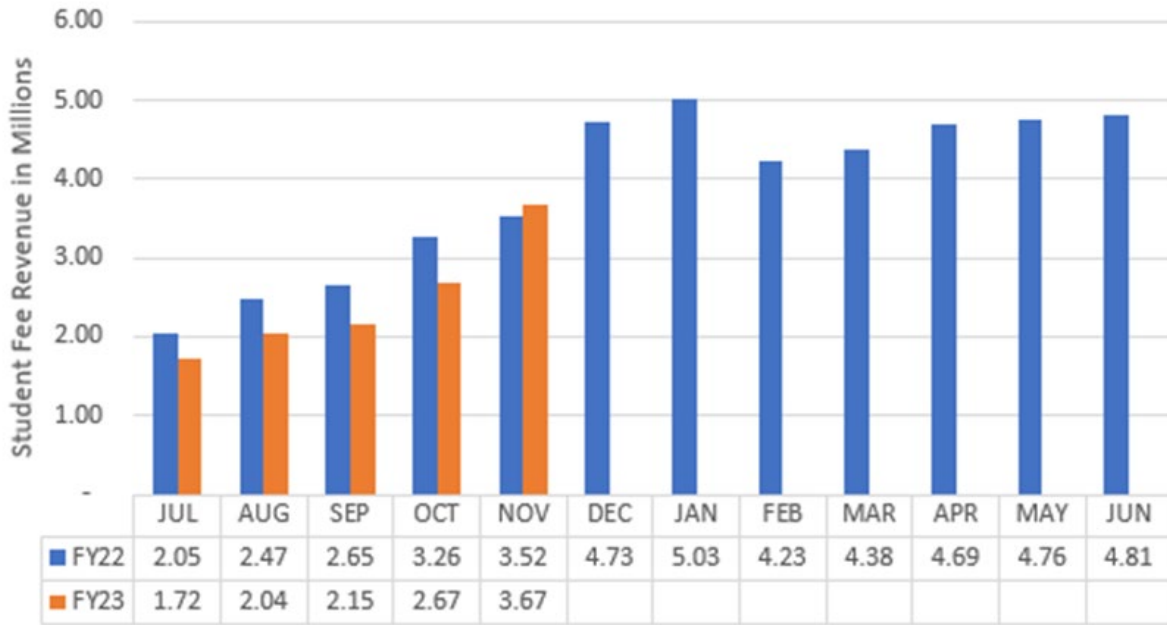
TO: SOUTH FLORIDA STATE COLLEGE
DISTRICT BOARD OF TRUSTEES

FROM: THOMAS C. LEITZEL 

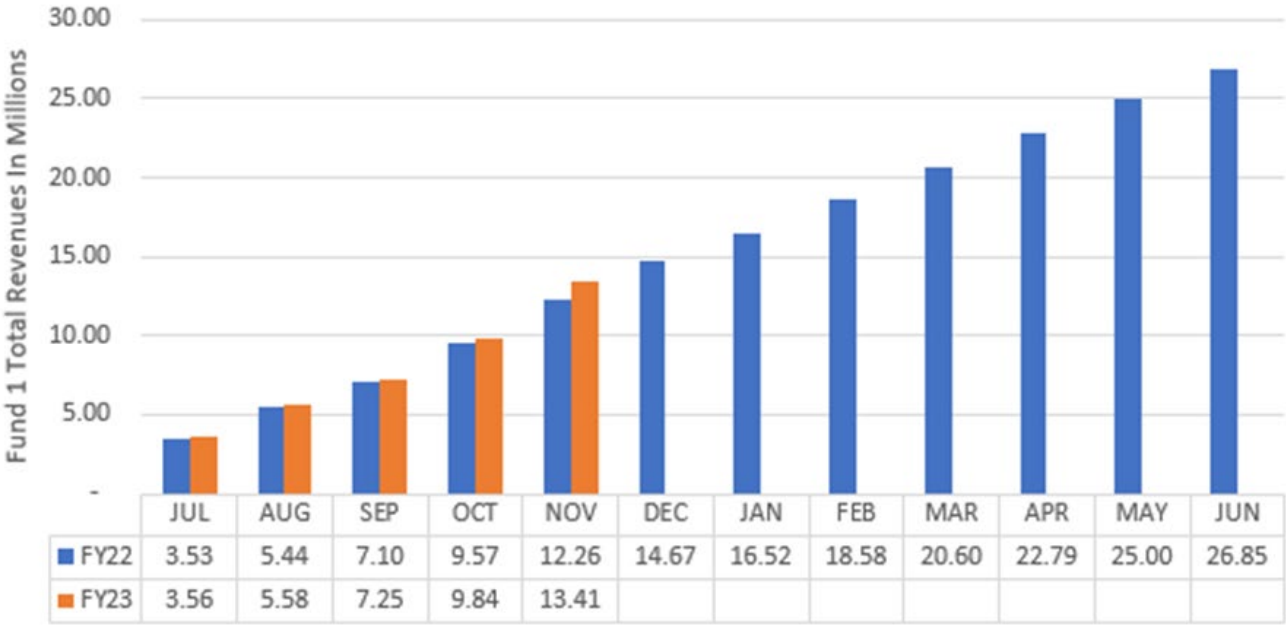
SUBJECT: FINANCIAL REPORT SUMMARY & GRAPHS – **INFORMATION ITEM**

Enclosed for your review are the graphs and a summary of revenues and expenditures compared to budgeted funds within the Operating Budget through November 2022.

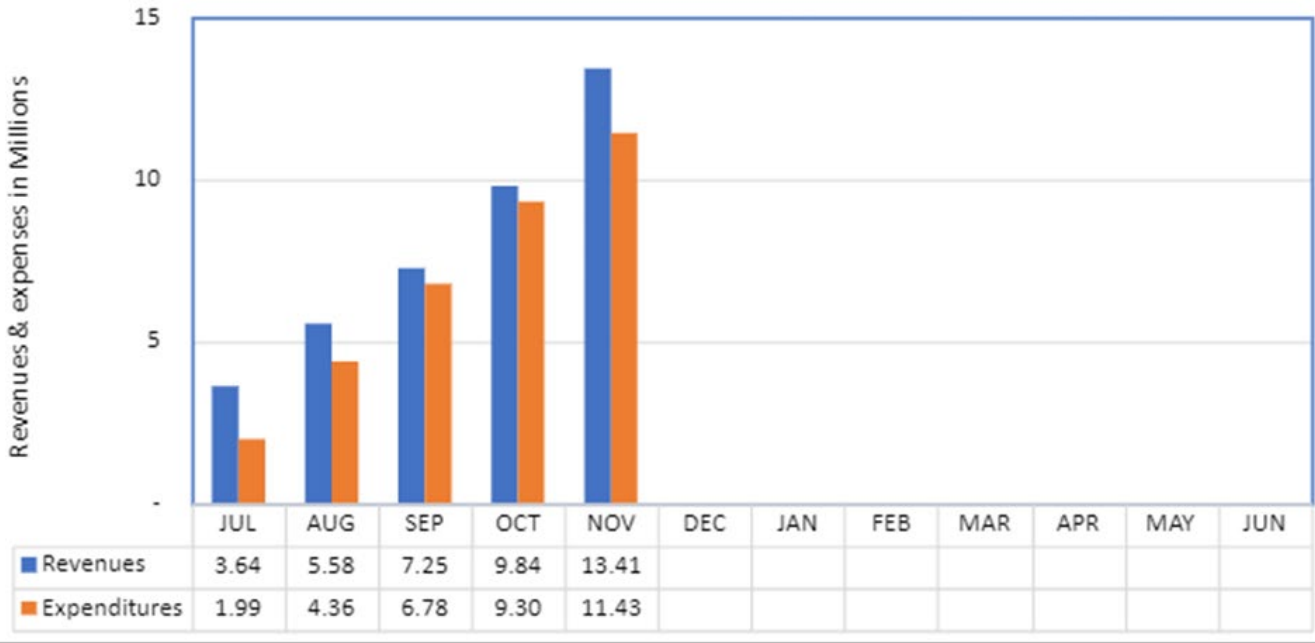
South Florida State College
Fund 1 - Student Fee Revenue, FY22 vs FY23



South Florida State College Fund 1 - Total Revenue FY22 vs FY23



South Florida State College Fund 1 Total Revenues & Expenditures FY23



South Florida State College
Revenue and Expenditures
For Month Ending November 30, 2022

Account Title	Budget Amount	Amount	Difference	Percentage Collected/Spent to Date
Tuition and Out of State Fees	4,165,275.00	2,913,017.44	1,252,257.56	69.94%
Lab Fees	495,023.00	500,748.00	(5,725.00)	101.16%
Technology Fees	189,932.00	141,685.40	48,246.60	74.60%
Other Student Fees	66,373.00	41,544.14	24,828.86	62.59%
Grants and Contracts from Counties	1,023,395.00	914,839.38	108,555.62	89.39%
FCSPF-General/Special Appropriation	18,485,964.00	7,769,997.00	10,715,967.00	42.03%
Performance Based Incentive	324,747.00	85,877.00	238,870.00	26.44%
CO&DS Entitlement	1,100.00	-	1,100.00	0.00%
FCSPF-Lottery	3,461,595.00	769,244.00	2,692,351.00	22.22%
Indirect Costs Recovered	751,562.00	157,421.85	594,140.15	20.95%
Cash/Non-Cash Contributions and Gifts	22,040.00	8,652.44	13,387.56	39.26%
Use of College Facilities	50,000.00	27,907.55	22,092.45	55.82%
Other Sales and Services	80,000.00	23,265.60	56,734.40	29.08%
Interest and Dividends	4,000.00	19,100.50	(15,100.50)	477.51%
Fines and Penalties/Miscellaneous	120,422.00	32,255.76	88,166.24	26.79%
Transfers and Other Revenues	100,000.00	(119.73)	100,119.73	-0.12%
Total Revenue	\$ 29,341,428.00	\$13,405,436.33	\$15,935,991.67	45.69%
Management	2,099,540.80	815,313.59	1,284,227.21	38.83%
Instructional	5,480,122.59	1,907,137.96	3,572,984.63	34.80%
Other Professional	3,666,364.72	1,322,356.87	2,344,007.85	36.07%
Career Staff	3,213,183.15	1,239,267.33	1,973,915.82	38.57%
Other Professional-Instructional	1,398,240.00	473,204.21	925,035.79	33.84%
Other Professional-Tech/Clerical/Trade	206,248.73	35,318.58	170,930.15	17.12%
Student Employment	25,000.00	1,095.01	23,904.99	4.38%
Employees Awards-Non Recurring	13,000.00	51,879.48	(38,879.48)	399.07%
Benefits	5,770,898.00	2,007,261.85	3,763,636.15	34.78%
Total Personnel	\$ 21,872,597.99	\$ 7,852,834.88	\$ 14,019,763.11	35.90%
Travel	281,928.00	43,908.92	238,019.08	15.57%
Freight and Postage	21,437.00	8,591.08	12,845.92	40.08%
Telecommunications	62,000.00	85,366.87	(23,366.87)	137.69%
Printing	38,510.00	4,143.55	34,366.45	10.76%
Repairs and Maintenance	1,676,633.66	788,184.02	888,449.64	47.01%
Rentals	158,705.00	70,779.31	87,925.69	44.60%
Insurance	550,682.00	47,086.03	503,595.97	8.55%
Utilities	1,658,078.00	702,684.61	955,393.39	42.38%
Other Services	910,418.67	445,582.16	464,836.51	48.94%
Grant Aid	4,280.00	207.50	4,072.50	4.85%
Professional Fees	132,553.00	105,033.01	27,519.99	79.24%
Education Office/Dept Materials Supp	699,939.00	315,943.87	383,995.13	45.14%
Data Software	208,277.50	119,891.49	88,386.01	57.56%
Maint/Construction Material/Supp	418,263.14	146,160.54	272,102.60	34.94%
Other Materials and Supplies	131,706.78	176,832.99	(45,126.21)	134.26%
Subscriptions/Library	60,600.00	18,240.19	42,359.81	30.10%
Purchases for Resales	42,100.00	7,193.70	34,906.30	17.09%
Scholarships	45,000.00	18,040.50	26,959.50	40.09%
Transfers and Other Expenses	150,000.00	3,101.60	146,898.40	2.07%
Total Current Expenses	\$ 7,251,111.75	\$ 3,106,971.94	\$ 4,144,139.81	42.85%
Minor Equipment >1000<5000	266,012.86	134,792.17	131,220.69	50.67%
Furniture and Equipment	429,044.00	338,387.26	90,656.74	78.87%
Total Capital Outlay	\$ 695,056.86	\$ 473,179.43	\$ 221,877.43	68.08%