




EXHIBIT "F"

OFFICE OF THE PRESIDENT

Item 9.1

PRESENT TO BOARD: APRIL 17, 2023

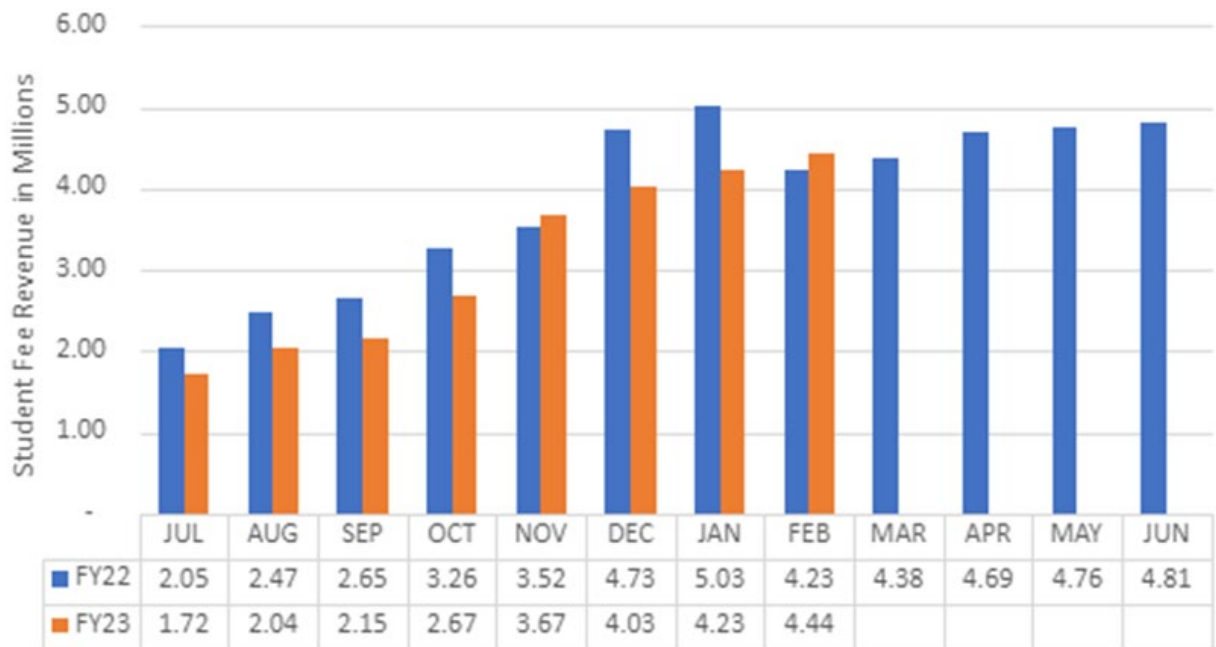
TO: SOUTH FLORIDA STATE COLLEGE
DISTRICT BOARD OF TRUSTEES

FROM: THOMAS C. LEITZEL 

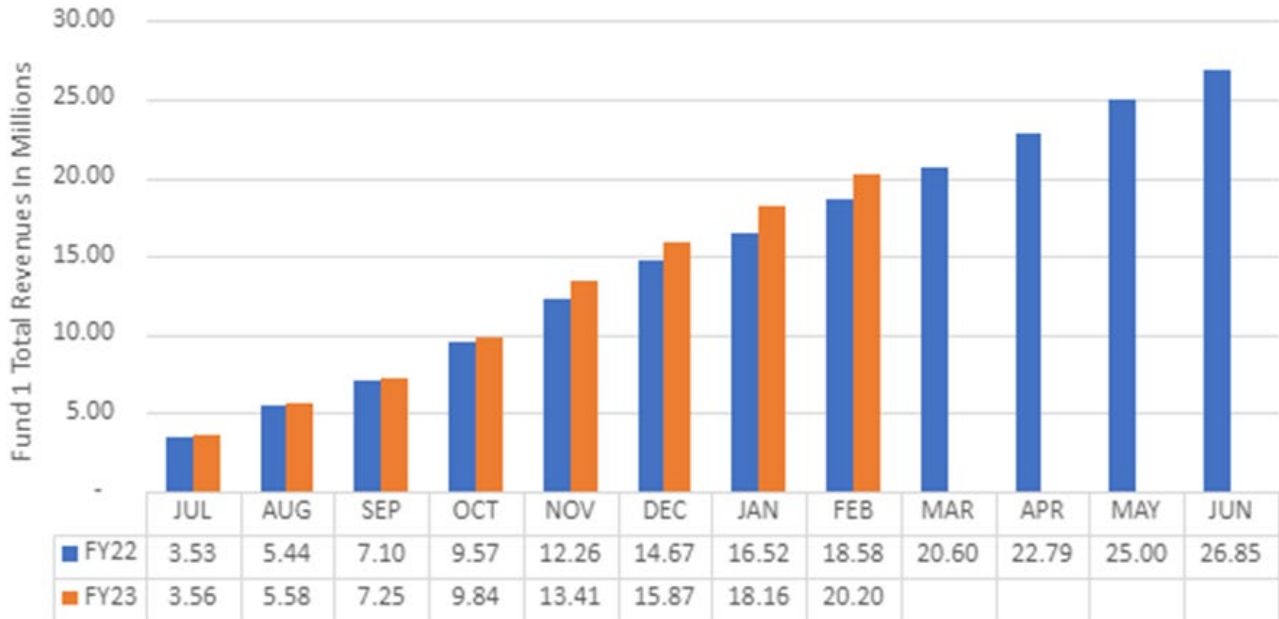
SUBJECT: FINANCIAL REPORT SUMMARY & GRAPHS – **INFORMATION ITEM**

Enclosed for your review are the graphs and a summary of revenues and expenditures compared to budgeted funds within the Operating Budget through February 2023.

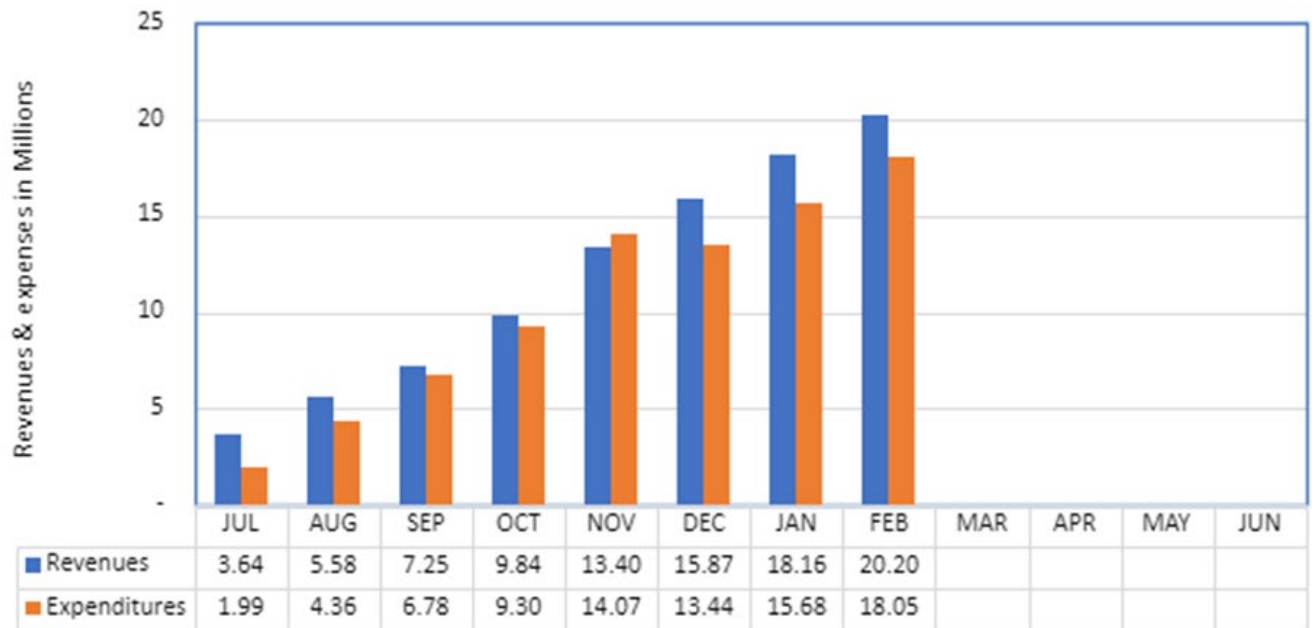
South Florida State College Fund 1 - Student Fee Revenue, FY22 vs FY23



South Florida State College Fund 1 - Total Revenue FY22 vs FY23



South Florida State College Fund 1 Total Revenues & Expenditures FY23



**South Florida State College
Revenue and Expenditures
For Month Ending February 28, 2023**

Account Title	Budget Amount	Amount	Difference	Percentage Collected/Spent to Date
Tuition and Out of State Fees	4,165,275.00	3,596,851.67	568,423.33	86.35%
Lab Fees	495,023.00	608,023.00	(113,000.00)	122.83%
Technology Fees	189,932.00	177,179.59	12,752.41	93.29%
Other Student Fees	66,373.00	54,870.12	11,502.88	82.67%
Grants and Contracts from Counties	1,023,395.00	995,049.50	28,345.50	97.23%
FCSPF-General/Special Appropriation	19,296,469.00	12,188,862.00	7,107,607.00	63.17%
Performance Based Incentive	324,747.00	328,441.00	(3,694.00)	101.14%
CO&DS Entitlement	1,100.00	-	1,100.00	0.00%
FCSPF-Lottery	3,461,595.00	1,923,110.00	1,538,485.00	55.56%
Indirect Costs Recovered	751,562.00	150,705.57	600,856.43	20.05%
Cash/Non-Cash Contributions and Gifts	22,040.00	8,652.44	13,387.56	39.26%
Use of College Facilities	50,000.00	40,264.88	9,735.12	80.53%
Other Sales and Services	80,000.00	41,674.73	38,325.27	52.09%
Interest and Dividends	4,000.00	53,143.95	(49,143.95)	1328.60%
Fines and Penalties/Miscellaneous	120,422.00	29,510.03	90,911.97	24.51%
Transfers and Other Revenues	100,000.00	(122.60)	100,122.60	-0.12%
Total Revenue	\$ 30,151,933.00	\$ 20,196,215.88	\$ 9,955,717.12	66.98%
Management	2,099,540.80	1,267,741.33	831,799.47	60.38%
Instructional	5,659,117.59	3,157,331.15	2,501,786.44	55.79%
Other Professional	3,736,364.72	2,126,866.18	1,609,498.54	56.92%
Career Staff	3,213,183.15	1,988,170.17	1,225,012.98	61.88%
Other Professional-Instructional	1,398,240.00	810,369.22	587,870.78	57.96%
Other Professional-Tech/Clerical/Trade	206,248.73	72,564.09	133,684.64	35.18%
Student Employment	25,000.00	2,779.40	22,220.60	11.12%
Employees Awards-Non Recurring	13,000.00	12,504.48	495.52	96.19%
Benefits	5,865,252.00	3,294,733.71	2,570,518.29	56.17%
Total Personnel	\$ 22,215,946.99	\$ 12,733,059.73	\$ 19,618,820.27	57.31%
Travel	281,928.00	89,051.02	192,876.98	31.59%
Freight and Postage	21,437.00	13,397.23	8,039.77	62.50%
Telecommunications	62,000.00	145,513.76	(83,513.76)	234.70%
Printing	38,510.00	7,372.94	31,137.06	19.15%
Repairs and Maintenance	1,626,633.66	1,102,395.24	524,238.42	67.77%
Rentals	158,705.00	123,436.65	35,268.35	77.78%
Insurance	550,682.00	281,877.57	268,804.43	51.19%
Utilities	1,659,778.00	1,133,211.41	526,566.59	68.27%
Other Services	960,418.67	601,242.81	359,175.86	62.60%
Grant Aid	4,280.00	1,444.50	2,835.50	33.75%
Professional Fees	132,553.00	133,637.14	(1,084.14)	100.82%
Education Office/Dept Materials Supp	785,934.00	546,167.18	239,766.82	69.49%
Data Software	208,277.50	124,881.49	83,396.01	59.96%
Maint/Construction Material/Supp	418,263.14	213,508.62	204,754.52	51.05%
Other Materials and Supplies	332,672.78	220,330.30	112,342.48	66.23%
Subscriptions/Library	60,600.00	62,030.71	(1,430.71)	102.36%
Purchases for Resales	42,100.00	19,137.17	22,962.83	45.46%
Scholarships	45,000.00	30,495.00	14,505.00	67.77%
Transfers and Other Expenses	150,000.00	3,101.60	146,898.40	2.07%
Total Current Expenses	\$ 7,539,772.75	\$ 4,852,232.34	\$ 2,687,540.41	64.36%
Minor Equipment >1000<5000	312,712.86	128,848.17	183,864.69	41.20%
Furniture and Equipment	512,539.00	294,676.64	217,862.36	57.49%
Repairs and Maintenance	50,000.00	43,710.20	6,289.80	87.42%
Total Capital Outlay	\$ 875,251.86	\$ 467,235.01	\$ 408,016.85	53.38%